



since 1989



RIDE YOUR DREAM

www.boom-trikes.com



2018





Just take off the workwear, put on the biker clothes and ride with a BOOM trike into another world. No matter if business man or employee, if young or old, if man or woman, if single or a family man – on a trike, everyone can leave the daily routine behind. To feel the wind in your face, to glide through the landscape, that's something that makes you feel the freedom on 3 wheels. As unique as the riding sensation is the triker community. Status symbols are not counting anymore, it doesn't matter what you are doing in your "normal life", the only thing that counts is the passion of riding a trike, to have fun together and to enjoy life.

CONTENT

About BOOM TRIKES	4
Model & equipment overview	10
Low Rider	14
Mustang	18
Mustang Xtreme	25
Mustang Family	32
Range of colours	38
Lifestyle	40
Impressions	44
Notes	50



TRIKE VS. BIKE

The last years, the trike sector experiences an increasing popularity. The reasons are that compared to bikes, trikes are non-tilting, have a reverse gear and can be driven with a car license. Our models Mustang, Mustang Xtreme and Mustang Family are equipped with a big trunk, ideal for two persons travelling with lots of luggage.

Compared to a bike, not only the driver, but also the co-driver is well integrated in the vehicle and is seated in an extremely comfortable and protected way. To ride a trike not only represents pure freedom, but compared to most of the bikes, a trike „Made in Germany“ is also a good investment with high value.

LEADING EDGE BY EXPERIENCE

A big and representative survey (Comparison of the biggest European trike manufacturers) among the readers of the TRIKE-Magazin confirms our work:

BOOM Trikes Quality:	N° 1
BOOM Trikes Design:	N° 1
BOOM Trikes Resale value:	N° 1

TRIKE Magazin (Source: TRIKE-Magazin)



The company founders W. Merkle and H. Böhm in the early years.

**BOOM TRIKES
PRODUCES EXCLUSIVELY
"MADE IN GERMANY"**

**TRIKE MANUFACTORY
STABLE MARKET VALUE BY
HANDMADE QUALITY PRODUCTION.**

Our vehicles are developed and constructed in our own manufactory in Sontheim, a Swabian village in the South of Germany.

Before the final assembly however, all needed "BOOM parts" have to be elaborately handmade for about 120-200 hours (depending on model and equipment).

Not till then, the vehicles will be finished with caring attention to detail.

Consequently, in general about 250 hand working hours are necessary for each BOOM trike.

Our vehicles may not be as plain perfect as a car which is made within just 4 hours by a robot, but the handwork makes them much more precious, exclusive and of lasting value.

BOOM Trikes with all the stainless steel parts are not only long-living, but are made for eternity.



Our self-imposed high quality management system, organized according to the rules of ISO 9001 and strictly controlled by the German TÜV each year also guarantees the constant high quality level of our products.



BOOM Highway 1990



BOOM TRIKES 1989-1991.



BOOM TRIKES 1992-2013.

29 years ago, in September 1989, the construction of the first prototypes was started. On 29.01.1990, Christine and Wolfgang Merkle as well as Hermann Böhm founded the one-man company "BOOM Exklusivfahrzeuge" which later became BOOM TRIKES Fahrzeugbau GmbH. Since 1992, after a move, the head office is located at Sontheim/Brenz, a Swabian village in the South of Germany.

BOOM TRIKES established itself very quickly on the market and was able to double its turnover every year in the early days.

1995, after over 700 sold units and a 40 % market share, BOOM TRIKES achieved the market leadership. In 1997, as first trike producer, BOOM TRIKES was certificated in accordance with the DIN EN ISO 9001. An extremely high quality and security level was achieved. Until today, the German TÜV is severely controlling this quality level every year.

In 1998, the next obstacle, the European homologation for all BOOM TRIKES models, was surmounted. From this moment, BOOM TRIKES was able to deliver all trike models to the European market. Also outside of the EU, BOOM TRIKES delivers vehicles to all over the world. BOOM trikes do not only drive in the Alps, but also in Africa, Australia, the Andes or on the highways overseas.

BOOM trikes are not only means of transportation, but became more and more a life philosophy, related to Harley Davidson, but on 3 wheels. A life philosophy that allows for freedom and adventure, travel desire and closeness to nature.

To experience the trike fascination together with their families and friends represents more than a hobby to many trikers – it is simply their life.

The success of BOOM TRIKES is also due to the fact that each time at the right moment, the right products have been launched to the market.

So now the company offers 4 different trike models. Director Wolfgang Merkle: "Our efforts for the future are: offering our trike customers a large range of new vehicles with the best cost-benefit perspective on the market."

Another milestone was set by building the new manufacturing facility in Sontheim an der Brenz. BOOM TRIKES profess themselves clearly to the manufacturing base Germany. Approximately 10.000 trikes built so far are without exception made in Germany. All BOOM trikes are developed and constructed in our own construction department. The trikes can be built in series in the new and roomy assembly hall with shorter distances for the workers. Spray painting is done on site. That means that special requests can be realized very fast. In the big storehouse, more than 7.000 different component parts are available in sufficient quantity for the production and shipping.

All BOOM trikes are developed and built in our own construction department.

Nowadays, about 30 employees are operating at the head office of BOOM TRIKES in Sontheim and 40 more collaborators are working in a subsidiary, where spare parts are made.

Over 200 suppliers are providing parts to BOOM TRIKES. The BOOM TRIKES network covers approx. 100 dealers and locations, half of them in Germany and the other half all over the world. Altogether, according to Wolfgang Merkle, "approximately 300 persons are working with the product BOOM TRIKES, and this already for almost 30 years. A reason to be really proud!"

The BOOM TRIKES Manufactory since 2014.



THE BOOM TRIKE MANUFACTORY IN SONTHEIM AN DER BRENZ, GERMANY











PARTS PRODUCTION



MODEL OVERVIEW 2018

			Manual transmission	Automatic transmission		
		Motor	1,5 l (110 HP)	1,6 l VTI (115 HP)	2,0 l (140 HP)	2,0 l Turbo (203 HP)
2 seats	Low Rider Classic design with modern engine		4 gears Lateral gear change V _{max} = 160 km/h Towing capacity 368 kg 2 seats	----	----	----
	Mustang Sportive touring trike with big trunk		5 gears Selectable middle or lateral gear change V _{max} = 160 km/h Towing capacity 322 kg 2 seats	4 gears Torque converter V _{max} = 165 km/h Towing capacity 379 kg 2 seats	4 gears Torque converter V _{max} = 180 km/h Towing capacity 362 kg 2 seats	----
	Mustang Xtreme Strong and fast, the dawn of a new era		----	----	----	6 gears Torque converter V _{max} = 225 km/h Towing capacity 362 kg 2 seats
3 seats	Mustang Family Fun travelling for the whole family		5 gears Selectable middle or lateral gear change V _{max} = 160 km/h Towing capacity 326 kg 3 seats	4 gears Torque converter V _{max} = 165 km/h Towing capacity 383 kg 3 seats	4 gears Torque converter V _{max} = 180 km/h Towing capacity 362 kg 3 seats	----

COMPREHENSIVE STANDARD EQUIPMENT "BASIC"

- GRP-bodywork with big trunk (not for Low Rider)
- Comfort fork Ø 48 mm with 2 Koni gas-pressurised shock absorbers
- 10 different standard colours, painted in gel coat technique (not for Low Rider)
- Sport seats with lateral hold, waterproof
- Front wheel 170/60-17 on 5,00x17 alloy rim, Compressor design, chrome
- Rear wheels 295/50 on 10x15 alloy rims, whole pattern design, chrome
- Modern rear alloy chassis
- Bilstein gas-pressurised shock absorbers
- Brake and clutch¹ pedal in black
- Quick adjustment of clutch¹ pedal (¹ not applicable on automatic models)
- Exhaust system Sport 4in1, polished stainless steel
- Dual-circuit integral brake system
- Brake booster, front and rear disc brakes
- Headlights bracket in polished stainless steel
- 2 additional headlights mounted on the fork
- Sport Touring handlebars in polished stainless steel, Ø 22 mm
- Hazard warning lights
- Instruments unit with speedometer, revolution counter, trip recorder, voltmeter, water temperature gauge, clock
- Vehicle tool kit, first-aid kit with warning triangle
- Waterproof electro-safe
- Chrome grips, chrome pedal linings
- Rearview mirror chromed
- Passenger arm rests
- Handbrake faced with stainless steel and stainless steel grip
- Preparation for navigation system
- 12 V socket
- ABS prepared
- Automatic brake proportioning front and rear wheels
- Steel braided brake lines
- Warning waistcoat



Big trunk:
for Mustang, Mustang Xtreme and Mustang Family.



Wide-base tyres: Rear 295/50 with rim protection on 10x15 rims.



Frame: Plastic coated with car standards (salt spray test 600 h). Increased corrosion protection by 4-phases handling. Thick wall-thickness. Buckling resistant and optimal riding quality.



Modern instrument cockpit:
Digital display of all necessary information, with diode technique.



Handbrake: Faced with stainless steel and stainless steel grip.



Attachment parts: Over 50 new stainless steel parts instead of galvanized or coated parts, as stainless steel tank, expansion tank, engine holder, gear box holder, engine facing, coolant facing, handbrake facing, air shields, miscellaneous small parts as well as all mounting parts.



Chassis: Alloy semi-trailing link axle with adjustable Bilstein threaded suspension and 3 selectable springs: soft, medium, hard.



All models are prepared for ABS, which is available for an extra charge. The Ultimate has ABS as standard and the Basic and Advance models can be retrofitted later.



Electro-safe: Waterproof and neatly stored electronic.

ADVANTAGE EQUIPMENT "ADVANCE"

Includes "Basic" equipment and additionally:

- Exhaust system 4in4, polished stainless steel
- Leg protection bar and luggage rack, polished stainless steel, Ø 60 mm
- Stabiliser (rear axle)
- Comfort fork Ø 60 mm, polished stainless steel with 2 Koni shock absorbers
- Main headlights, design "Bullet"
- Additional headlights 6,5"
- High performance brake system (rear) with ventilated brake discs and big brake calipers
- Front wheel 200/50-17 on 5,50x17 alloy rim, Shark design chrome
- Rear wheels 295/50-15 on 10x15 alloy rims, Shark design chrome
- BOOM rear spoiler, black (not for Low Rider)
- Comfort seats sewn by hand
- Bi-Colour standard colours painted in gel coat technique (not for Low Rider)
- Rear mudguards optional in design "Shark" or design "Style" (not for Low Rider)



Exhaust system 4in4



Leg protection bar and luggage rack, stainless steel, Ø 60 mm



Main headlights design "Bullet"



Additional headlights 6,5"



High performance brake system (rear)



Rear alloy rims design "Shark", chrome 10x15"

OUR THREE EQUIPMENT VERSIONS:

- Basic** It's the basic version, without any extras, however since 2016 with serial big trunk (not for Low Rider), Bilstein suspension, wide-base tyres, and much more.
A comprehensive standard equipment!
- Advance** It's our most chosen version with numerous extras. The Advance version offers a **top price-performance ratio!**
- Ultimate** It's our **full equipment with all extras!** (excluding individual extras). Attention: No other trike manufacturer worldwide has such a comprehensive full equipment package like BOOM with alloy chassis, Jet Light system, Liftomatic, premium VDO instruments and much more.



BOOM rear spoiler, black



Mudguards design "Shark"



Mudguards design "Style"

In case of additional equipment of the "Advance" version, the basic equipment is not applied.

FULL EQUIPMENT "ULTIMATE"

Includes "Basic" and "Advance" equipment and additionally:

- Pedal(s), foot rest mounting, passenger bar, luggage rack and bumper. At Family additionally passenger retaining clamp, all in polished stainless steel.
- Optional frame extension (10 cm)
- Comfort fork Ø 76 mm, polished stainless steel, with 2 Koni shock absorbers and internal wires
- Touring handlebars Ø 38 mm, optional Touring handlebars wide Ø 42 mm, polished stainless steel
- Tiptronic on handlebars (automatic models)
- Design mirrors, black
- Exclusive BOOM/VDO premium instruments unit
- Cockpit fairing with headlights or optional additional headlights 6,5"
- Jet Light System, optional main headlights design "Bullet"
- Daytime running light (integrated in bulb holder)
- Reversing lights for stainless steel bumper (not for Low Rider)
- High-quality Garmin navigation system (waterproof)
- Alarm system
- Racing brake system with 360 mm brake discs, red painted, for 18" wheels or optional high performance brake system with ABS for 18" wheels (not for Low Rider)
- Front wheel 200/50-17 on 5,5x17 alloy rim, Shark design chrome, optional Compressor design chrome or matt black
Rear wheels 295/30-18 on 11x18 alloy rims, Shark design chrome, optional Compressor design chrome or matt black
optional rear wheels 295/50-15 on 10x15 alloy rims, Shark design chrome
- Liftomatic
- Seat heater front and rear (Family rear middle)
- Bi-colour special colours or standard colours optional
- Seats in black, lateral supports in black, optional lateral supports in red or grey



Stainless steel package



Stainless steel package



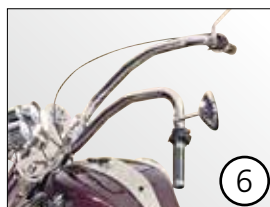
Stainless steel package



Stainless steel package



Comfort fork Ø 76 mm



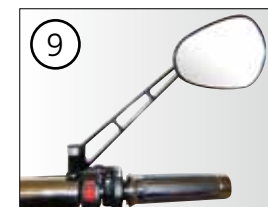
Touring handlebars
Ø 38 mm



Touring handlebars wide Ø
42 mm



Tiptronic
(automatic models)



Design mirrors



BOOM/VDO premium
instruments unit



Cockpit fairing



Jet Light System



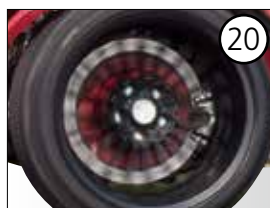
Daytime running light/
Reversing lights



Navigation system



Liftomatic



Racing brake system



Set of wheels
"Shark" design
Rear wheels 10x15"



Set of wheels
"Shark" design
Rear wheels 11x18"



Set of wheels "compressor"
design chrome



Set of wheels
"compressor" design
matt black

In case of additional equipment of the "Ultimate" version, the basic equipment is not applied.

LOW RIDER



CLASSIC DESIGN, COMBINED WITH MODERN TECHNOLOGY

An extremely deep and comfortable seating position excels the Low Rider. Outstanding handling characteristics combined with elegant design inspire its special character.

A generously dimensioned steel framework has worked satisfactorily in the hard every day life of renting applications. Since 2005, the Low Rider is available in the Muscle version with a modern 4-cylinder in-line engine. Since model year 2016 with an increased-power rated engine 1,5 l (110 HP) in our range.

A clearly increased maximum speed as well as more power in all situations of life and less consumption has pushed the classic "Beetle trike" out of the market. The Low Rider Muscle is a beautiful and up-to-date trike, which unites most modern vehicle construction technology with conventional design in unique harmony.



Optional extras: Stainless steel package, Touring handlebars Ø 38 mm, paint

TECHNICAL DATA

LOW RIDER

Engine

1,5 l 4-cylinder in-line engine
with controlled catalytic converter

Power 110 HP (81 kW)

Gears (forward/reverse) 4/1

Torque 140 Nm at 3.000 min⁻¹

Max. speed 160 km/h

Fuel consumption/Range
approx. 5 - 7 l/100 km / 400 - 600 km

Type of fuel

Super unleaded 95 ROZ or E10

Fuel capacity 38 l

Frame 2-parted

Body ABS plastic

Dry weight

approx. 730 kg (depending on equipment)

Gross vehicle weight 1.000 kg

Vehicle load capacity

approx. 195 kg (depending on equipment)

Towing capacity 368 kg

Dimensions (depending on equipment)

Length 3.555 - 3.680 mm

Width 1.840 - 1.860 mm (depending on tyres)

Height 1.200 - 1.440 mm

No. of seats 2

Service interval every 10.000 km

Guarantee 2 years



LOW RIDER ADVANCE



Optional extras: Stainless steel package, Touring handlebars Ø 38 mm, paint

MUSTANG TRIKES

COMFORTABLE SPORTY WAY TO TRAVEL

With its 4 different selectable engines, the Mustang ushers a new era in the trike sector. Not only thanks to the compactness, mobility and driving agility but also due to the extremely comfortable seating position and the extraordinary design, the Mustang is the trike everyone is talking about. The Mustang is the best-selling trike of the BOOM product range and it is also available as Mustang Xtreme and Mustang Family (3 seats). Because of the deep and secure seating position, the co-driver is sitting well-protected behind the driver and is at the same time able to glance over him. On request, the seats can be bolstered

up free of charge for smaller passengers in order to allow them to have the same good view despite of the low seat position. Since model year 2016, the Mustang disposes of a standard convenient trunk with 240 l storage space.

As short version: available for drivers with a body height of approx. 160 cm to approx. 180 cm.

As long version: for drivers with a body height starting from 180 cm, a frame extension is recommended.

LARGE STORAGE SPACE

Big 240 l trunk - standard for all Mustang models.



BEING COMFORTABLY SEATED



Comfortable, waterproof seats sewn by hand are standard for our versions "Advance" and "Ultimate".

EASY TO MAINTAIN

Liftomatic: with only one hand movement, the complete technology is accessible for maintain services (optional extra).







MUSTANG

Engine

4-cylinder in-line engine
with controlled catalytic converter (see page 10)

Power

from 110 HP (81 kW) to 203 HP (149 kW)

Gears

(see page 10)

Max. speed

from 160 km/h to 225 km/h
(depending on motorization)

Fuel consumption/Range

approx. 5 - 10 l/100 km / 350 - 600 km
(depending on motorization)

Type of fuel

Super unleaded 95 ROZ or E10

Fuel capacity 38 l

Frame 2-parted tubular frame, steel, bolted

Body Wear-resistant GRP

Dry weight

approx. 645 kg to 745 kg
(depending on model and equipment)

Gross vehicle weight

1.000 kg to 1.100 kg (depending on model)

Vehicle load capacity

approx. 225 kg - 280 kg
(depending on model and equipment)

Towing capacity

322 kg to 379 kg (depending on model)

Dimensions

(depending on model and equipment)
Length 3.675 - 3.875 mm
Width 1.680 - 1.945 mm (depending on tyres)
Height 1.350 mm

No. of seats 2

Service interval every 10.000 km

Guarantee 2 years



Equipment "Advance"

Optional extras: Stainless steel package, Touring handlebars wide Ø 42 mm, rear wheels "Shark" design 11 x 18", BOOM/VDO premium instruments unit.



MUSTANG ULTIMATE



MUSTANG





MUSTANG XTREME





MUSTANG XTREME



Picture shows "Ultimate" equipment









TECHNICAL DATA

2,0 LITER TURBO

Engine

2.0 GTDI EcoBoost

Manufacturer

Ford Motor Company

Engine type

4-cylinder in-line engine,
DOHC double overhead camshaft

Engine block Aluminium

Cylinder head Aluminium

No. of valves 16

Power 203 HP (149 kW)

Torque 398 Nm / 2500 rpm

Turbo Single

Cubic capacity 1999 ccm

Compression rate 9.3 :1

Weight 140 kg

Dimensions 679 x 664 x 568 mm

Fuel system High pressure direct injection engine

Gears 6 gears, automatic gearbox with tiptronic

Top speed 225 km/h

Speed-up 0-100 km/h in 4,3 sec.

Fuel consumption/range approx. 8-10 l./100 km /
250 - 400 km (depending on driving)

Fuel Super unleaded 95 ROZ or E10

Fuel capacity 52 l

Frame 2-parted tubular frame, steel, bolted

Body Wear-resistant GRP

Dry weight approx. 780 kg

Gross vehicle weight 1.100 kg

Vehicle load capacity approx. 320 kg
(depending on equipment)

Towing capacity 362 kg (EU)

Dimensions (depending on equipment)

Length 3.675 - 3.875 mm

Width 1.680 - 1.945 mm

Hight 1.350 mm

No. of seats 2

Service interval every 10.000 km

Guarantee 2 years

Made in Germany

MUSTANG FAMILY

The Mustang is also available as Family trike with 3 seats. Based on the established previous Family II Muscle model, the chassis has been re-designed. When you drive with only two persons, the co-driver can sit centrally. Due to the folding passenger protection bar, getting on or off the trike is quite easy for the co-driver. The width of the passenger seat was enlarged by approx. 10 cm. The windbreak and the center of gravity are optimized by considerably deeper positioned seats. The

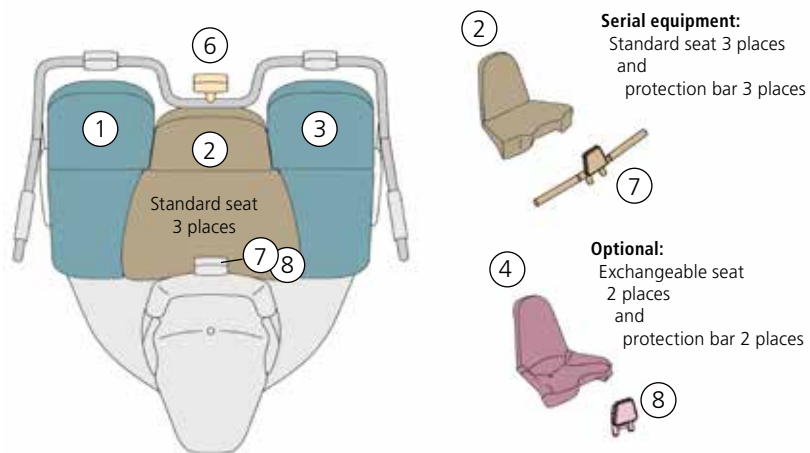
standard trunk of 240 liters and the big luggage rack of the Mustang Family trike offer storage space for the whole family.

As short version: available for drivers with a body height of approx. 160 cm to approx. 180 cm.

As long version: for drivers with a body height starting from 180 cm, a frame extension is recommended.

The Mustang Family, too, is upgradable with a Liftomatic.

MODIFICATION SYSTEM FOR FAMILY MUSTANG SEATS



All Mustang Family models will generally be delivered with 3 individual seats ①②③ with continuous seating area. Also standardly delivered: the movable head support ⑥ as well as the 3 seater protection bar ⑦. Therefore, as standard version, the trike can be driven by 1, 2 or 3 persons.

In order to offer a higher comfort to our customers, we also provide as an option the exchangeable seat (for 2 persons) ④ which will be delivered together with a 2 seater protection bar ⑧.





MUSTANG FAMILY ADVANCE



Optional extras: BOOM/VDO premium instruments unit, stainless steel package, Touring handlebars wide Ø 42 mm.

**MUSTANG FAMILY****Engine**

4-cylinder in-line engine
with controlled catalytic converter (see page 10)

Power

from 110 HP (81 kW) to 140 HP (103 kW)

Gears

(see page 10)

Max. speed

from 160 km/h to 180 km/h
(depending on motorization)

Fuel consumption/Range

approx. 5 -10 l/100 km / 350 - 600 km
(depending on motorization)

Type of fuel

Super unleaded 95 ROZ or E10

Fuel capacity 38 l

Frame 2-parted tubular frame, steel, bolted

Body Wear-resistant GRP

Dry weight

approx. 653 kg to 745 kg
(depending on equipment)

Gross vehicle weight

1.000 kg to 1.100 kg (depending on model)

Vehicle load capacity

approx. 280 kg
(depending on model and equipment)

Towing capacity

326 kg to 383 kg (depending on model)

Dimensions

(depending on model and equipment)

Length 3.675 - 3.875 mm

Width 1.680 - 1.945 mm (depending on tyres)

Height 1.350 mm

No. of seats 3

Service interval every 10.000 km

Guarantee 2 years



MUSTANG FAMILY ADVANCE



Optional extras: BOOM/VDO instruments unit, stainless steel package, Touring handlebars wide Ø 42 mm

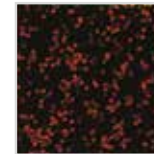


COLOURS

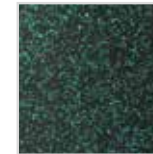
COLOUR PALETTE OF BOOM TRIKES

- We provide all RAL, metallic or bi-colour paints for an extra charge (see list of extra charges). For all Ultimate models, you can freely choose your desired colour (unicolour or bi-colour) without extra charge.

• Our 10 standard colours (for Mustang, Mustang Xtreme and Mustang Family)



Black red
effect



Black green
effect



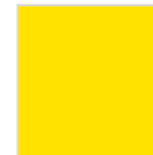
Black blue
effect



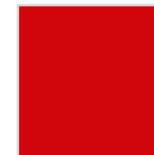
Sapphire
RAL 5003



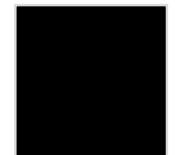
White
RAL 9003



Yellow
RAL 1021



Red
RAL 3002



Black
RAL 9005



Graphite grey
RAL 7024



Orange
RAL 2004

• Our 2 standard colours for Low Rider (Body parts made of deep-drawn plastic material)



Blue metallic



Red metallic

**For the Low Rider model,
the 10 standard colours
(see above) are available
for an extra charge.**

BI-COLOUR DESIGN (for Mustang, Mustang Xtreme and Mustang Family)

* Bi-Colour special colours includes
base colour bodywork (K) in colour: _____
and attachment parts (H)(L)(S)(T) in contrast colour: _____

- rear spoiler (H)
- air scoop(s) (L)
- two side inlets (S)
- triangle on tank dummy (T)



Driver seat
Basic colour black
Lateral support (A) in:
☐ black
☐ red
☐ grey



LIFESTYLE FOR HER AND HIM



BOOM LEATHER JACKET

The exclusive and heavy duty BOOM leather jacket for trikers, who would like to have something special. Leather and inside lining are black, inside pocket with zipper. Artwork on the back.

Sizes: S-XXXL
Item number: 300 05 38
Price: € 297,50



WAISTCOAT "NIGHT RIDER"

Artistic airbrush-artwork on a tied up, black leather waistcoat
Sizes: L-XXXL
Item number: 300 05 30
Price: € 292,00



FLEECE JACKET

Stand-up collar with synthetic zipper. Sleeve bunch with elastic. Straight cut sweater.

Embroidery:
Logo on the left side of the chest
Sizes: S-XXL
Colour: grey
Item number: 300 04 70
Price: € 62,50

BOOM SWEATSHIRT

Selected quality with embroidered logo.
Sizes: L-XXL

Colour: black, red or blue
Item number: 300 04 09
Price: € 49,90





BLACK T-SHIRT

100 % fine combed cotton. Ideal dimensional stability by ringspin. Comfortably soft to touch. About 160g ware with reinforced neck tie.

Imprint: front Logo
back Pegasus, silver
Sizes: S-XXL
Colour: Black
Item number: 300 02 89
Price: € 19,90



T-SHIRT LOGO & TRIKE

Sizes: S-XXL
Colour: black or white
Item number: 300 03 06
Price: € 9,00



POLO PIQUET CONTRAST

Trendy two-coloured polo shirt. Button panel, collar and cuffs with white stripe. Ribbed collar. Embroidered logo on the left side of the chest.

Sizes: S-XXL
Colour: navyblue/white
Item number: 300 04 59
Price: € 39,00



NECK WARMER

Thermax fleece lining, breathable. Nibo wind stopper, lateral zipper. Imprint: BOOM TRIKES, silver
Sizes: S, M, L, XL

Colour: black
Item number: 300 38 80
Price: € 23,80



BANDANA

Imprint: Pegasus + „Triker“, silver
Sizes: one-size
Colour: black
Item number: 300 01 76
Price: € 22,00



BOOM BRACES

With cases for cigarette boxes and cigarette lighter worked into them.

Item number: 300 06 10
Price: € 23,50

BASEBALL CAP

Imprint: Logo, 3-coloured
Colours: black, blue, red
Item number: black 300 01 60
blue 300 01 61
red 300 01 62

Price: € 9,10



CAP

Size: one size
Embroidery: Logo, 3 coloured
Color: black
Item number 300 01 80
Price: € 24,50



SUN GLASSES

High-quality sun glasses with de-mister coating and optimal protection against UV radiation and stone-chipping.

Imprint : Logo, silver

Sizes: one-size

Colour: black

Item number: 300 35 80

Price: € 40,00



BOOM PATCH

Cotton patch.

Size: about 90 x 60 mm

Item number: 300 20 10

Price: € 5,60



BOOM EMBLEM

Sticker round

Size: Ø 50 mm

Item number:

300 21 31

Price: € 9,00

BOOM EMBLEM

Sticker

Size: 115 x 55 mm

Item number: 300 20 50

Price: € 9,00



BOOM STICKER

Logo with BOOM colours.

Size: 14 x 8 cm

Item number: 300 21 15

Price: € 0,55



BOOM ZIPPO

High-quality cigarette lighter that works with gasoline.

Logo engraved.

Item number:

300 10 70

Price: € 49,00



GLOVES "SILVERSTAR"

Wind and water resistant.

Continuously lined. Nubuck leather on the inside hand. Bolstered up by Kevlar.

Imprint: Logo, white

Sizes: 7-12

Colour: black

Item number: 300 38 08

Price: € 39,00



KIDNEY BELT

Lined inside, on the back taller cut.

Variable adjustment of the different parts by stretch inset. Velcro.

Imprint: Logo, 3 coloured

Sizes: 1 = 95 cm total length

2 = 110 cm total length

3 = 120 cm total length

4 = 130 cm total length

Item number: 300 38 60

Price: € 11,90



BEER MUG

Bavarian mug, 0,5 l
grey glazed
Imprint: Logo, 4-coloured
Item number: 300 05 30
Price: € 9,90



FLAT BOTTLE

High-quality flat bottle,
out of polished stainless steel, 240 ml
with engraved logo.
Item number: 300 24 80
Price:
€ 19,60



BOOM MULTITOOL

Multi-part, high-quality pocket-knife.
Contains pliers and torch, saw and
screwdriver. Handle with engraved
logo. Matching nylon cover to put on
belt. Packed in a precious metal box.
Item number: 300 35 70
Price: € 33,60



POCKET-KNIFE

Precious pocket-knife. Logo engraved.
Item number: 300 35 60
Price: € 18,50



GLASS DICE

with trike in 3-dimensional effect
made by laser technology.
Size: 80 x 50 x 50 mm
Item number: 300 24 10
Price: € 45,20



WEIZEN BEER GLASS

Weizen Beer glass "Walchensee", 0,5 l
Imprint: Logo, white matt
Item number: 300 24 70
Price: € 7,00



FIGURE PEGASUS

Screwable
Height: approx. 60 mm
Item number: 300 20 60
Price: € 53,50



KEYRING PENDANT

of dull metal with engraved Pegasus.
With a bright LED light and 5 keyrings
that can be taken off in a decorative
giftbox. 2 batteries for a long use.
Item number: 300 25 00
Price: € 7,60



BOOM CUP

High-quality coffee cup
of refined stainless steel
with engraved logo.
Item number: 300 24 40
Price: € 14,00



BOOM WRIST WATCH „CLASSIC“

with date display and elegant leather
bracelet.
Item number: 300 35 22
Price: € 115,00

Since the year 2000, BOOM TRIKES has regularly been doing test rides in winter with all models of the next season. The trikes are driven for about 10.000 km under the toughest conditions and the outcome of these extreme tests are then incorporated into serial production.
Constructed by trikers for trikers.













Blank lined area for writing.







This catalogue **BOOM TRIKES 2018** is valid as of **01.03.2018**.
Protective charge is € 3,-. We reserve the right to make any
alterations to technical specifications and colours.
No liability for misprint. No direct sales ex works.

Your BOOM Partner:

BOOM TRIKES Fahrzeugbau AG
Industriestr. 6 · D-89567 Sontheim an der Brenz · www.boom-trikes.com